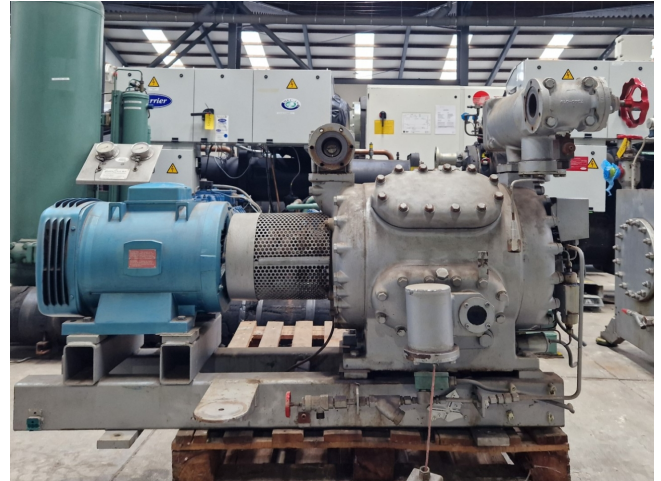


Sabroe CMO 24

Specifications

Brand	Sabroe
Type	CMO 24
Refrigerant	Freon
kW at +10°C/+40°C	76,8
kW at 0°C/+40°C	50,1
kW at -5°C/+40°C	39,6
kW at -10°C/+40°C	30,7
Electromotor Specs	Leroy-Somer P180M4
On steel base frame	✓
Pressure safety switches	✓
Hp/Lp/Op	
Pressure gauges	✓
Hp/Lp/Op	
Liquid line filter drier	✓
Sight Glass	✓
m3 / h	93,0 m ³ /h
Remarks	Y.o.b. 1988
Sizes	1500x620x920 mm (LxWxH)



Description

Used Sabroe CMO 24

Used Sabroe CMO 24 open-type reciprocating compressor on Freon. Complete with a Leroy-Somer P180M4 electric motor - 50 Hz - 22 kW - 1430 RPM, pressure and safety switches/gauges and sight glass. The compressor has a displacement of 93,0 m³/h at 1430 RPM.

*Why choose for HOSBV? Were not only the largest used refrigeration specialist in Europe, but also, we solely deliver our orders after performing an extensive test and an industrial cleaning. If requested we are happy to arrange your logistics.



